



Inver Grove Heights Parks and Recreation Advisory Committee

Wednesday, November 12, 2025 at 5:00 PM

8150 Barbara Avenue, Inver Grove Heights, MN 55077

AGENDA

1. **Call to Order**

2. **Roll Call**

3. **Presentations**

4. **Announcements**

5. **Consent Agenda**

All items on the Consent Agenda are considered routine and have been made available to the Commission at least two days prior to the meeting; the items will be enacted in one motion. There will be no separate discussion of these items unless a Commission member or citizen so requests, in which event the item will be removed from this Agenda and considered in normal sequence.

6. **Public Comment**

Public comment provides an opportunity for the public to address the Commission on items that are not on the agenda. Comments will be limited to three (3) minutes per person.

7. **Unfinished Business**

Items that are brought back to the Commission for action from a previous meeting

8. **Regular Agenda**

A. Veterans Memorial Community Center Indoor Playground Design

B. Sleepy Hollow Park Playground Replacement Options

9. **Administrative Presentations**

10. **Commission Comments**

11. **Adjourn**

November 12, 2025 - Parks and Recreation Advisory Committee Agenda



**Parks & Recreation Advisory Commission
Staff Report**

**SUBJECT: Veterans Memorial Community Center Indoor
Playground Design**

MEETING DATE: November 12, 2025

ITEM TYPE: Regular Agenda

CONTACT: Adam Lares, Parks & Recreation Director, 651.450.2587
Aaron Fitzloff, Facilities Maintenance Superintendent, (651) 450-2469
Julie Dorshak, Recreation Superintendent, 651.450.2588
Jamie Muscha, Community Center Manager, 651-554-3442

PURPOSE/ACTION REQUESTED

Staff requests the commission provide feedback on the proposed indoor playground design for the Veterans Memorial Community Center (VMCC) Brightside Room.

BACKGROUND

Following the June 2, 2025 joint work session between the City Council and the Parks and Recreation Advisory Commission (PRAC), staff received clear direction to advance design efforts for an indoor playground at the Veterans Memorial Community Center (VMCC), specifically within the Brightside Room.

Since that time, staff has been working with the design firm Webber Recreation to develop a concept that best fits the facility's needs and community expectations. Over the past several months, staff has visited six public indoor playgrounds to evaluate operations, safety, materials, and design features, and collaborated with facility staff at those sites to better understand the benefits and challenges of various layouts and equipment. Through this process, multiple design iterations were reviewed and refined to ensure the proposed concept maximizes play value, safety, and long-term sustainability.

The attached design concepts represent the preferred option developed through these efforts and will be reviewed during the work session. In addition to the playground equipment and surfacing, this project also includes design and construction of a new entrance to the Brightside Room, which will involve removal of a wall segment, installation of a new door and window, electrical modifications, and installation of ceiling fans. Final cost estimates for these associated improvements are being developed and will be presented to the City Council once all components have been fully vetted.

FISCAL IMPACT

Funding for the indoor playground project was approved in the 2025 Community Center Capital Improvement Plan (CIP) in the amount of \$350,000. However, as discussed during the June 2 joint work session, staff anticipates the total project cost will likely be closer to \$450,000. Cost savings identified from other 2025 CIP projects that are no longer needed are expected to offset the additional expenses, allowing this project to remain within the approved 2025 CIP budget allocations.

RECOMMENDATION

ATTACHMENTS

1. Brightside Room Indoor Playground Design



...with all your heart, w
...giving you today
...when you s
...down and whe
...?

IMAGINE THE ADVENTURE

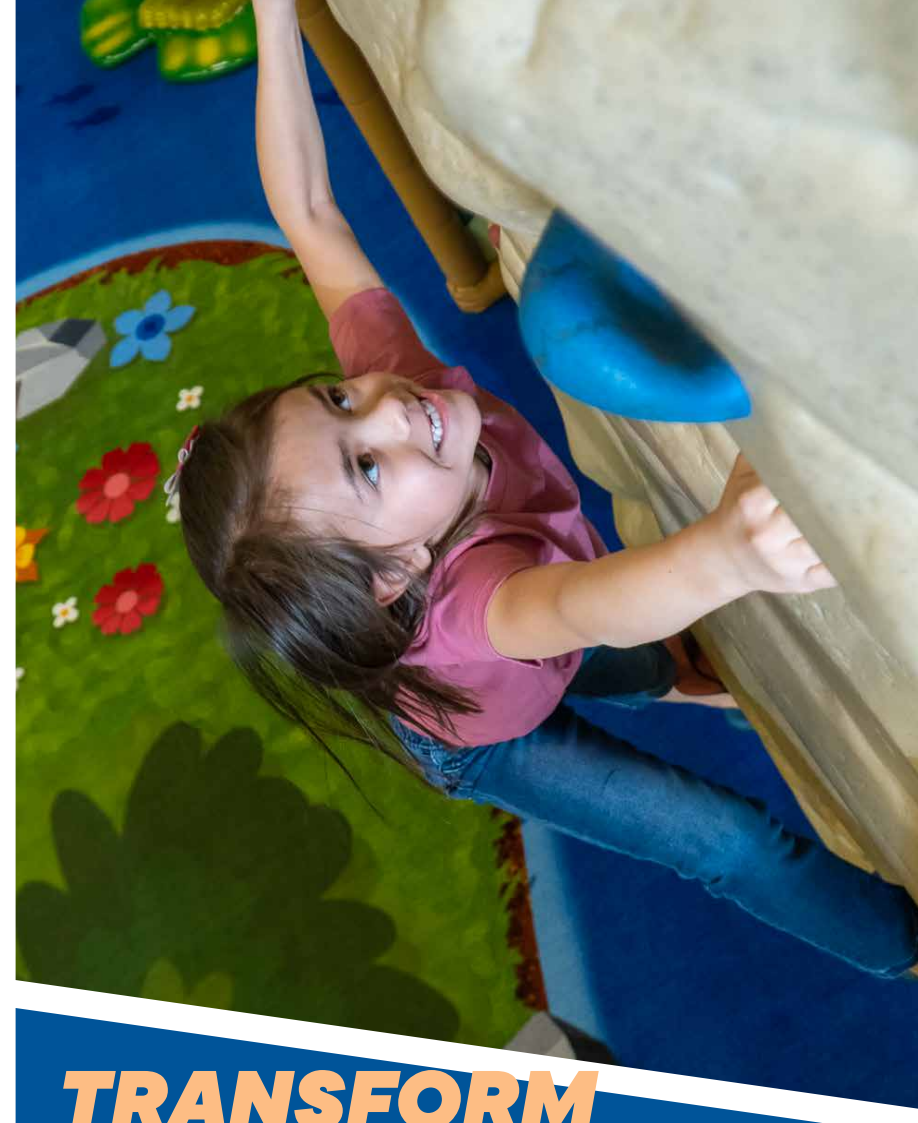
WEBBER RECREATIONAL DESIGN-55033

PROPOSAL 15653E-02

29 OCTOBER 2025

WELCOME

We are excited for the opportunity to create a one-of-kind experience for you to transform your space into a high-value entertainment setting where your guests will not only see your brand, but they will experience it. The Soft Play® team is working hard at studying your space, vision, brand and target audience to create a unique experience for you that will deliver lasting results.



**TRANSFORM
YOUR SPACE
ELEVATE YOUR
EXPERIENCE**

We're here to turn your vision into a one-of-a-kind destination that guests will remember—and return to. By blending your brand, space, and audience insight, Soft Play® creates immersive experiences that deliver lasting impact and keep the excitement alive.

OUR STORY: BUILT ON PLAY

- ⚡ **EXPERT DESIGNERS & ENGINEERS**
- ⚡ **TOP LEVEL PROJECT MANAGEMENT**
- ⚡ **RIGOROUS SAFETY AND QUALITY STANDARDS**
- ⚡ **WORLD-CLASS CUSTOMER SERVICE**
- ⚡ **TURNKEY SOLUTIONS**
- ⚡ **GLOBALLY CONNECTED**

SAFETY AND QUALITY

At Soft Play®, safety and quality are built in from day one. From innovative design to flawless installation, every product meets or exceeds ASTM 1918 standards and complies with the Consumer Product Safety Improvement Act—giving you peace of mind with every play.



**DESIGNED AND
ASSEMBLED IN AMERICA**

60+ COUNTRIES

40 YEARS OF EXPERIENCE

40K COMPLETED PROJECTS

DESIGN VISION

STORYTELLERS

Our greatest assets are our creative designers and storytellers. The Soft Play creative team offers you the ability to make a statement through distinctive ideation and creative execution. We use well-established methodologies and leading concepts and practices to ensure your experience is unique and impactful.



ARTISANS

Our skilled team has mastered sculpting, painting, designing, and engineering that embody a rare fusion of creativity, precision, and innovation. Sculptors transform raw materials into timeless forms, revealing emotion and story through texture, balance, and detail. Painters bring visions to life with masterful use of color, light, and technique, capturing both the seen and the unseen.



PLAY VALUES

BUILT FOR PLAY VALUE DESIGNED FOR SMILES

At Soft Play, play value is core to everything we create. Our playgrounds are designed to engage kids physically, emotionally, and imaginatively encouraging movement, exploration, and connection.

We go beyond fun to deliver purposeful, age-appropriate experiences that kids love and parents' trust. From sculpted features to immersive play experiences, every element is crafted to spark activity, creativity, and family connection.

*Because when play is meaningful,
it creates positive ROI:*

- Increased traffic, influencing revenue channels due to dwell time
- Repeat visits & business, driving memberships and loyalty
- Impact on children's and parents' quality of life



IMAGINATION

Stimulates creativity to keep the mind as active as the body



ACTIVE

Gets arms, legs, hearts and lungs working



EXCLUSIVE

Play events that are exclusive to Soft Play



SENSORY

Involves sights, sounds and touch as you play



SOCIAL

Encourages kids to play cooperatively



INCLUSIVE

Enables kids of all abilities to play



Size
32' x 32'



Surface Area
512 sq ft



Height
18'-3 1/2"



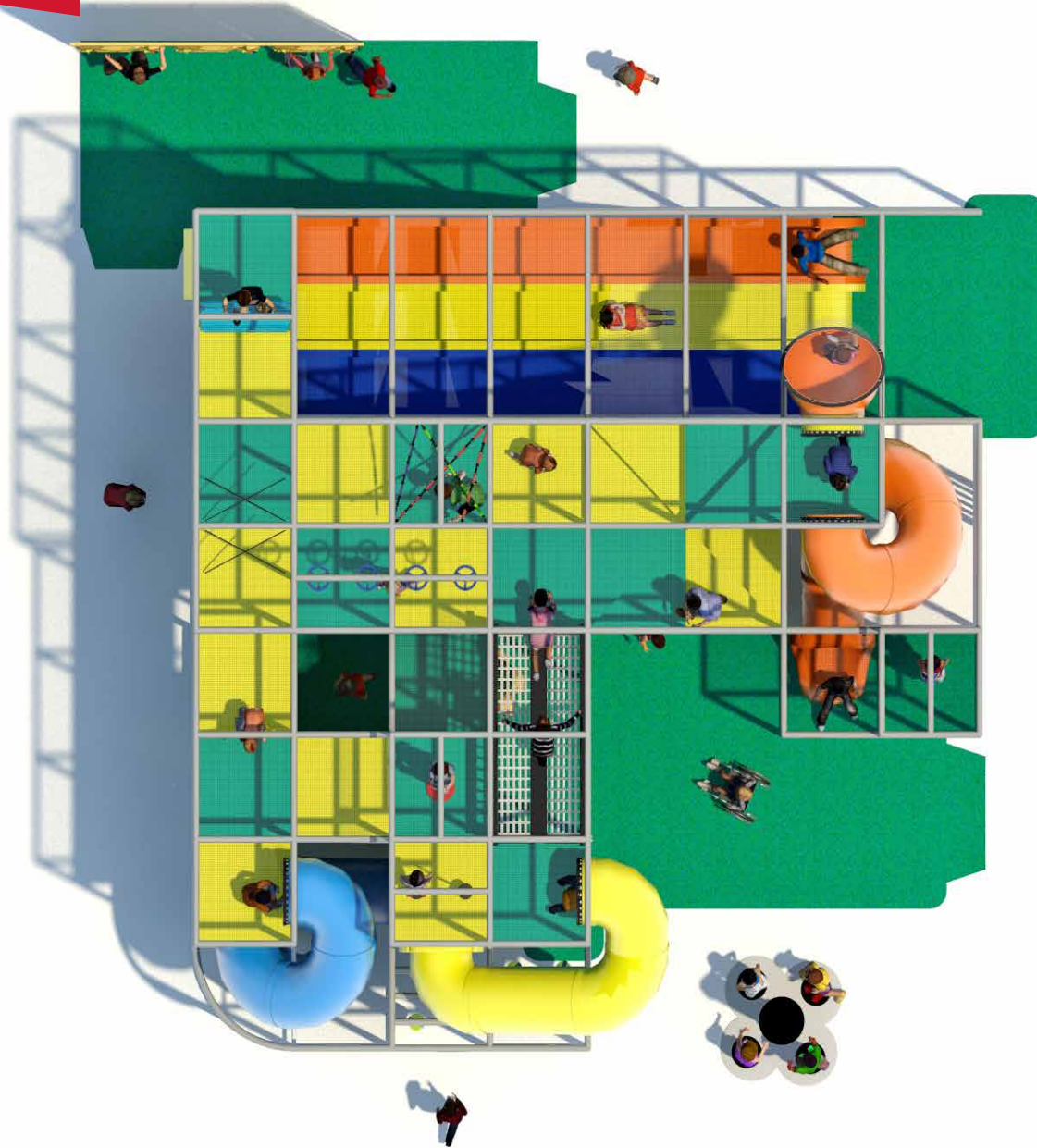
Play Capacity
116 Child Capacity



PERSPECTIVE VIEW

TOP VIEW

Soft Play Project Proposal



PERSPECTIVE VIEW

Soft Play Project Proposal



PERSPECTIVE VIEW

Soft Play Project Proposal



PERSPECTIVE VIEW

Soft Play Project Proposal



PERSPECTIVE VIEW

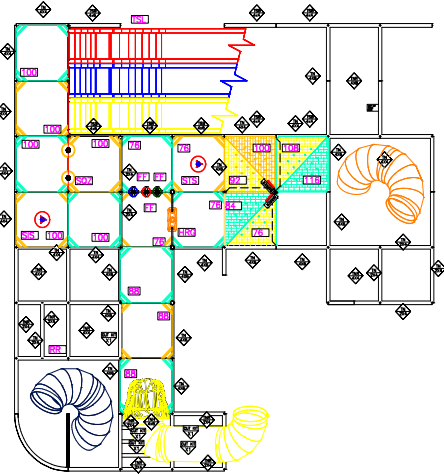
Soft Play Project Proposal



PERSPECTIVE VIEW

Soft Play Project Proposal

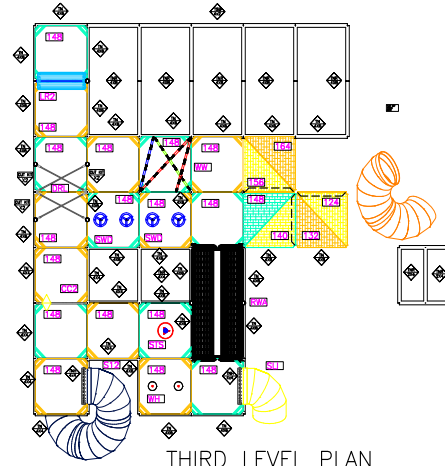




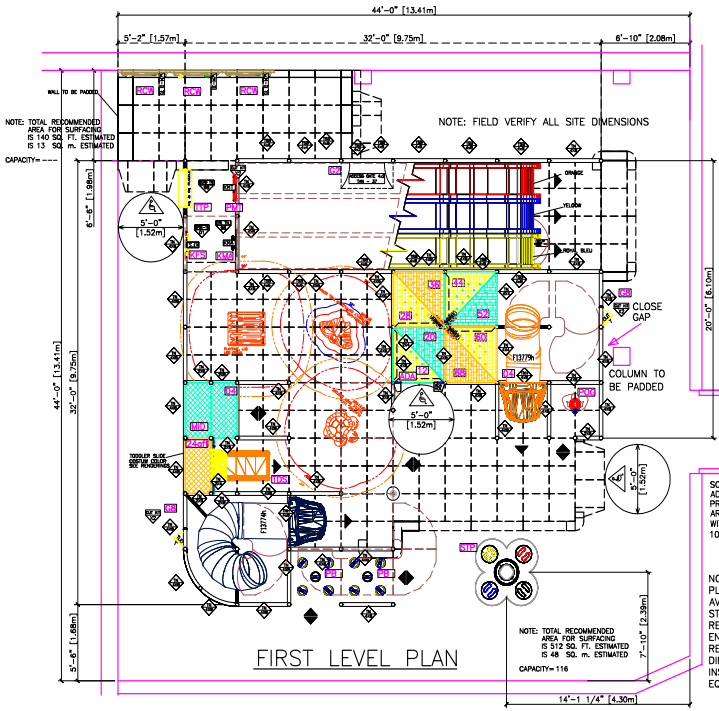
SECOND LEVEL PLAN

FEATURE COMPONENTS

- AA ALLEGATOR ALLEY
- ADA ENTRY HANDLE
- CC2 CRISS CROSS
- DRL DRAGON'S LAIR
- FF FUN FOREST 5' TALL
- GB GATE
- HRC HOVER RING
- KMA MIRROR DRIVE PANEL
- KFS SPINNERS
- LR2 LOG ROLL 2
- OB OBSERVATION BALL
- PB PUNCHING BAGS
- POG POGO POWER
- PMT MATH BEAD PANEL
- RWA ROPE WALK
- RWA ROPE WALK
- SLI J-HOOK SLIDE
- S12 SLIDE 12 FEET
- S14 SLIDE 14 FEET
- SIS SIT-N-SPIN
- STP STOMP 4 PLAYERS
- STS STAND-N-SPIN
- SND SKYWHEEL-DOUBLE
- TDS TODDLER SLIDE
- TTP TIC TAC TOW PANEL
- TSL TRIPLE SLIDE
- WH2 WOBBLE HOPPER
- WW WIGGLE WAGGLE

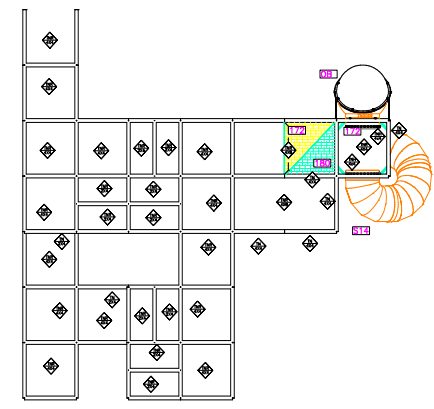


THIRD LEVEL PLAN



FIRST LEVEL PLAN

SCULPTS -SEE RENDERING-
CUSTOM COLORE -SEE RENDERING-



FOURTH LEVEL PLAN

SOFT PLAY, LLC. IS NOT RESPONSIBLE FOR ADA COMPLIANCE WHEN PRE-MANUFACTURED RUBBER TILE RAMPS ARE USED ON POURED CONCRETE SLABS WITH A GRADE TOLERANCE OF ±1/8" IN 10'.

NO ARCHITECTURAL PLANS WERE AVAILABLE AT DESIGN STAGE-CUSTOMER IS RESPONSIBLE FOR ENSURING MINIMUM REQUIRED SITE DIMENSIONS FOR INSTALLATION OF PLAY EQUIPMENT

.TRIPLE SLIDE TO BE ORANGE
CUSTOM COLOR SEE RENDERINGS
.RED PANELS IN ADULT WALKWAY
TO BE ORANGE

PANEL DESIGNATIONS GENERAL + TUFF NET

GENERAL RESIDENT

MATERIAL	SIZE	COLOR	DESCRIPTION
LC	24" x 24"	CLR	Clear
MB	48" x 48"	CLR	Clear
MB	48" x 48"	CLR	Mirrored
STP	24" x 24"	CLR	Platform Step Filler
STP	24" x 24"	CLR	Platform Step Filler, Kick-Pl.
STP	24" x 24"	CLR	Platform Step Filler, Net
STP	24" x 24"	CLR	Kick Plate 8" x 24"
STP	24" x 24"	CLR	Kick Plate 12" x 24"
STP	24" x 24"	CLR	Kick Plate 18" x 24"
STP	24" x 24"	CLR	TuffNet® Roof Panel
STP	24" x 24"	CLR	TuffNet® with HOLE
STP	24" x 24"	CLR	TuffNet® above expanded deck
STP	24" x 24"	CLR	TuffNet® Diagonal
STP	24" x 24"	CLR	TuffNet® Edge Attachment
STP	24" x 24"	CLR	TuffNet® Platform ATT. #1/2" Edge
STP	24" x 24"	CLR	TuffNet® Platform ATT. #3/4" Edge
STP	24" x 24"	CLR	Triple Side TuffNet® Panel
STP	24" x 24"	CLR	Extruded Pad Assembly 300#
STP	24" x 24"	CLR	Extruded Pad Assembly 150#
STP	24" x 24"	CLR	Out Kit 1#
STP	24" x 24"	CLR	Out Kit 2#

ABBREVIATIONS

LC CLEAR LEAN
MB MIRROR
STP PLATFORM STEP FILLER, KICK-PL.
STP PLATFORM STEP FILLER, NET
STP KICK PLATE 8" x 24"
STP KICK PLATE 12" x 24"
STP KICK PLATE 18" x 24"
STP TuffNet® ROOF PANEL
STP TuffNet® with HOLE
STP TuffNet® above expanded deck
STP TuffNet® DIAGONAL
STP TuffNet® EDGE ATTACHMENT
STP TuffNet® PLATFORM ATT. #1/2" Edge
STP TuffNet® PLATFORM ATT. #3/4" Edge
STP TRIPLE SIDE TUFFNET® PANEL
STP EXTRUDED PAD ASSEMBLY 300#
STP EXTRUDED PAD ASSEMBLY 150#
STP OUT KIT 1#
STP OUT KIT 2#

LEGEND

REQUIRED SIGNAGE use sizes for approved brand complying with ASTM F 1419-19. ESTIMATED SIGNAGE TO BE ADDED TO THIS DRAWING.

Sealer: Kasper, 5/16" section as located, identify with color (404).

Locked opening only with door (404).

Entry/Exit Point

ADA Wheelchair turning area, Compliant.

Wheelchair parking area, U.S.A.

Indicates existing component to be reused in Replay units.

Interior walling barrier

SOFT PLAY CONSTRUCTION

- Panel of concrete to be placed in 4" lifts.
- LC-panels shall be placed in 4" lifts.
- Concrete shall be a minimum of 4" thick.
- The support structure of the first story shall be constructed according to the Soft Play treatment and approved by the Soft Play engineer.
- Concrete shall be a minimum of 4" thick.
- The support structure of the first story shall be constructed according to the Soft Play treatment and approved by the Soft Play engineer.
- Soil to be compacted per Soft Play engineering report at least.
- Floor of concrete shall be supported with steel wire mesh 1/2" per foot.
- Ready mix concrete shall be placed in 4" lifts.
- Ready mix concrete shall be placed in 4" lifts.
- Ready mix concrete shall be placed in 4" lifts.

REVISIONS

LETTER/CALC/DATE	DESCRIPTION
A	10/07/25 SA
B	09/09/25 IE
C	10/07/25 IE
D	10/07/25 IE
E	10/27/25 IE
F	11/07/25 IE
G	10/29/25 IE
H	10/29/25 IE
I	10/29/25 IE
J	10/29/25 IE
K	10/29/25 IE
L	10/29/25 IE
M	10/29/25 IE
N	10/29/25 IE
O	10/29/25 IE
P	10/29/25 IE
Q	10/29/25 IE
R	10/29/25 IE
S	10/29/25 IE
T	10/29/25 IE
U	10/29/25 IE
V	10/29/25 IE
W	10/29/25 IE
X	10/29/25 IE
Y	10/29/25 IE
Z	10/29/25 IE

NOT FOR CONSTRUCTION

PRELIMINARY DESIGN

DRAWING FOR APPROVAL OF LAYOUT ONLY. DESIGN IS SUBJECT TO CHANGE BASED ON ENGINEERING AND ACTUAL SITE CONDITIONS.

OWNER TO VERIFY ALL EXISTING AND PROPOSED SITE CONDITIONS BEFORE INSTALLATION OF ANY SOFT PLAY, LLC. PLAY EQUIPMENT CAN BEGIN.

4 0 4 8

DISCLAIMER OF LIABILITY

SOFT PLAY, LLC. CONFIRMS THAT THE PLACEMENT AND CONFIGURATION OF SOFT PLAY EQUIPMENT SHALL AS DEPICTED ON THIS DRAWING, COMPLY WITH THE USE ZONE REQUIREMENTS OF ASTM F 1918 AND OTHER APPLICABLE GUIDELINES. SOFT PLAY IS UNABLE TO VERIFY THE COMPLIANCE OF ANY ON-SITE CONFIGURATION AND/OR PLACEMENT OF NON-SOFT PLAY PRODUCTS, AND THEREFORE, SPECIFICALLY DISCLAIMS, REFLECTS, AND DENIES RESPONSIBILITY AND/OR LIABILITY FOR ANY SUCH ON-SITE PLACEMENT OR CONFIGURATION OF NON-SOFT PLAY PRODUCTS. IT SHALL BE THE RESPONSIBILITY OF THE NON-SOFT PLAY PRODUCT VENDOR AND/OR THE OWNER/OPERATOR TO ENSURE COMPLIANCE WITH THE USE ZONE REQUIREMENTS OF ASTM F 1918 AND OTHER APPLICABLE GUIDELINES AS TO ALL NON-SOFT PLAY PRODUCTS.

SITE VERIFICATION

UNIT TYPE: CUSTOM
REF: 024967A

PLEASE SIGN, COPY AND FAX THIS PORTION TO INDICATE THAT ALL MEASUREMENTS, DISTANCES AND CLEARANCES ARE CORRECT AS SHOWN.

OBSTRUCTIONS NOT SHOWN MUST BE IDENTIFIED AND REMOVED. CORRECTIONS MUST BE MADE ON THIS PORTION AND RETURNED TO THE OFFICE OF SOFTPLAY, LLC. FOR APPROVAL PRIOR TO MANUFACTURING OF THE UNIT.

REGION MANAGER:
DATE:
OWNER/OPERATOR:
DATE:

WEBBER RECREATIONAL DESIGN - 55033

PROJECT: 1442 BROOKLE COURT
ADDRESS: 1442 BROOKLE COURT
CITY, STATE: HASTINGS, MN 55033

DATE: 06/20/2025

NTS
BY: [Signature]
CHECKED: [Signature]
DATE: [Signature]
JOB: PRPSL15653E
SHEET 1 OF 3 SHEETS

DESIGNS ARE THE PROPERTY OF SOFT PLAY, LLC AND ARE NOT TO BE SOLD, DISTRIBUTED, OR MANUFACTURED WITHOUT EXPRESS WRITTEN CONSENT. PRICES, COLORS, AND DESIGNS ARE SUBJECT TO CHANGE AT THE DISCRETION OF SOFT PLAY, LLC

© Soft Play, LLC. Copyright 2025 by PlayPower, Inc. | All rights reserved



ALLIGATOR ALLEY

Kids can build upper body strength swinging on arcing bars over an imaginary gator pit.



CRISS-CROSS

This high-step staggered obstacle is a hurdle kids will love getting over.



DRAGON LAIR

Kids will have a blast running this gauntlet of crisscrossing ropes again and again.



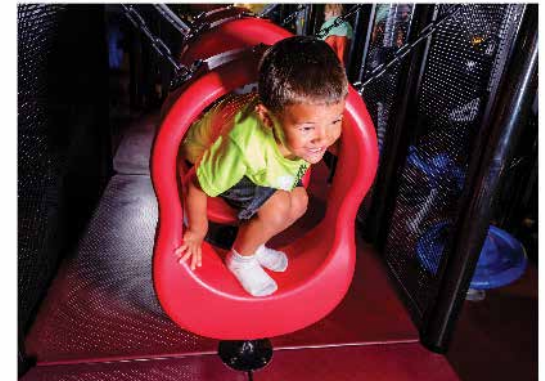
FUN FOREST

Kids will love finding their way through this maze's forest of hanging, foam-filled bags.



MOLDED ROCK COURSE

Kids will dig climbing these rock-and-fossil-inspired walls.



HOVER RING

This uniquely shaped, suspended ring is fun for kids to crawl through and hang out.

PLAY EVENT STAND ALONE

Soft Play Project Proposal



DRIVING MIRROR PANEL

Take the wheel to adventure on walls, activity fencing or playground barriers.



SPIN THE SHAPES PANEL

Kids will interact with different fun shapes to help sharpen their fine motor skills.



LOG ROLL

Kids can work out like a lumberjack while also learning core-body balance awareness.



OBSERVATION BALL

This 48-inch diameter dome gives kids a great birds-eye view of the entire play area.



POGO POWER

Kids can bounce up and down, high and fast as they like, on this stationary pogo.



MATH BEADS PANEL

This panel helps kids locate several items to reinforce counting and sequencing skills.

PLAY EVENT STAND ALONE

Soft Play Project Proposal



ROPE WALK

This open-crawl cargo net gives kids a fun way to overcome their fear of heights.



TODDLER SLIDE

Toddlers will be thrilled by this safe, age-appropriate slide made just for them.



TRIPLE SLIDE

This wide bed slide lets several kids enjoy this classic carnival ride at the same time.



SPIRAL SLIDE

Kids will love spiraling out of control on these smooth, fast and fun slides.



CURVED SLIDE

These "L-" or "J-" shaped slides add a classic twist to any playground.

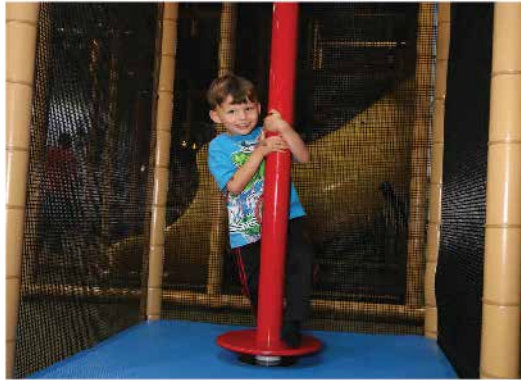


SIT-N-SPIN

Kids will love giving this heavy-duty version of the at-home kids' classic a whirl.

PLAY EVENT STAND ALONE

Soft Play Project Proposal



STAND-N-SPIN

This grown-up version of the classic toy lets kids spin like a champion ice skater.



SKYWHEEL

Kids will love taking a spin on this challenging hand-over-hand course with a twist.



TIC-TAC-TOE

This classic kids' game promotes social play in a fun way.



WOBBLE HOPPER

Kids will love shaking their way to better core balance and hand-eye-foot coordination.



WIGGLE WAGGLE

Kids can test their balance on this challenging open spider maze.

STOMP

An interactive play attraction that packs tons of action into a small space. This play experience puts players of all ages against one another in a fun, friendly, challenging competition that's as much fun to see as it is to play. Watch the crowds gather as players jump and stomp their way to the top score.

OVERVIEW

- Multi-Generational
- Active Play
- 1-4 Players
- Plug and play
- Interactive Experience



TRADITIONAL 2" SYSTEM

A 2" pipe and pad playground system is our most popular option. It offers the opportunity to easily replace the pads and update the look of the playground.

OVERVIEW

- 2" pipe & pad
- 4' modular grids with 14 G. galvanized frame
- Variety of post pad colors to activate your brand's colors
- Large number of unique and exclusive to Soft Play play events



MATERIALS POST PAD COLOR OPTIONS

Soft Play Project Proposal



Padded Post



Padded Post

ACTIVATE YOUR BRAND

Create photo-opportunities & Instagramable moments for your visitors. Themed play experiences increase brand awareness, build a positive lasting impression, and create free marketing opportunities as customers share their experiences online.

OVERVIEW

Soft to Touch Surfaces

Our play pieces have high-quality, soft foam surfaces that are smooth and protective.

Healthy Play

Promotes sensory, physical, cognitive, and imaginative play. Children can develop their motor, cognitive and social skills in a fun, unique environment.

Appropriate Size and Scale

Each play piece is scaled to just the right size for young children.

Antimicrobial Surfaces

Urethane coating inhibits the growth of germs, bacteria and other microorganisms. Plus, accessible and easy to clean surfaces.

Play Design

Colorful and bright artistic details. a simple-yet-fun design creates a unique space that will help you make an artistic, playful statement.



**GLASS FIBER REINFORCED
ELASTOMER OVERVIEW**

High Strength

High strength to weight ratio.

Lightweight

Low weight of 2 to 4 lbs. per square foot for fast installation and lower shipping cost.

Extremely durable

UV-stable and fade resistant materials withstand daily wear and tear.

Able to produce complex shapes

Virtually any shape or form can be sculpted and/or molded.

Safety

Meets all requirements for ASTM-1487 Standard Consumer Safety Performance Specifications.

Resistant to Extreme Weather and Chemicals

Resist salt water, chemicals, and the environment.

Coatings are naturally antibacterial



MATERIALS

ROTO MOLDED DECK SYSTEM

Soft Play Project Proposal



OVERVIEW

Appearance

Adds a modern look to a tower.

Slip-resistant

Textured surface.

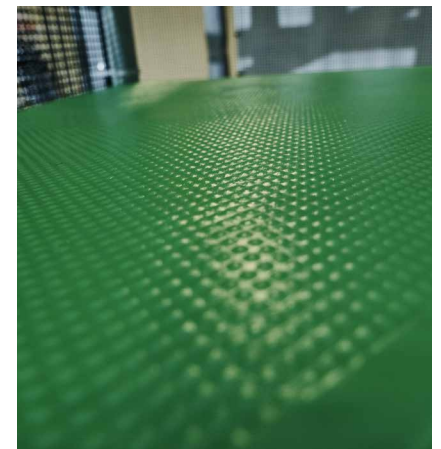
Longevity

Provides greater durability.

Structure

Consistent thickness of walls.

Variety of Colors



MATERIALS

ROTO MOLDED COMPONENTS

Soft Play Project Proposal



OVERVIEW

Appearance

Adds a modern look to a tower.

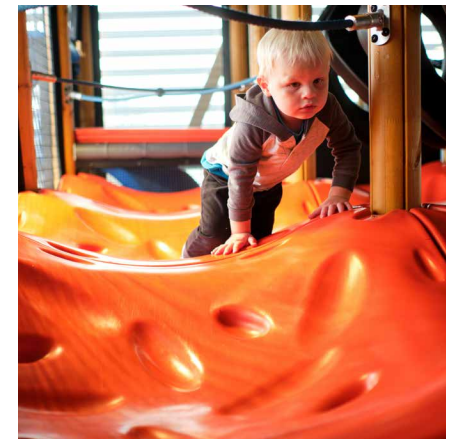
Longevity

Provides greater durability.

Structure

Consistent thickness of walls.

Variety of Colors



MATERIALS ROTO-MOLDED COLOR OPTIONS

Soft Play Project Proposal



OVERVIEW

Appearance

Improves visibility, doesn't show scratches and fingerprints.

Longevity

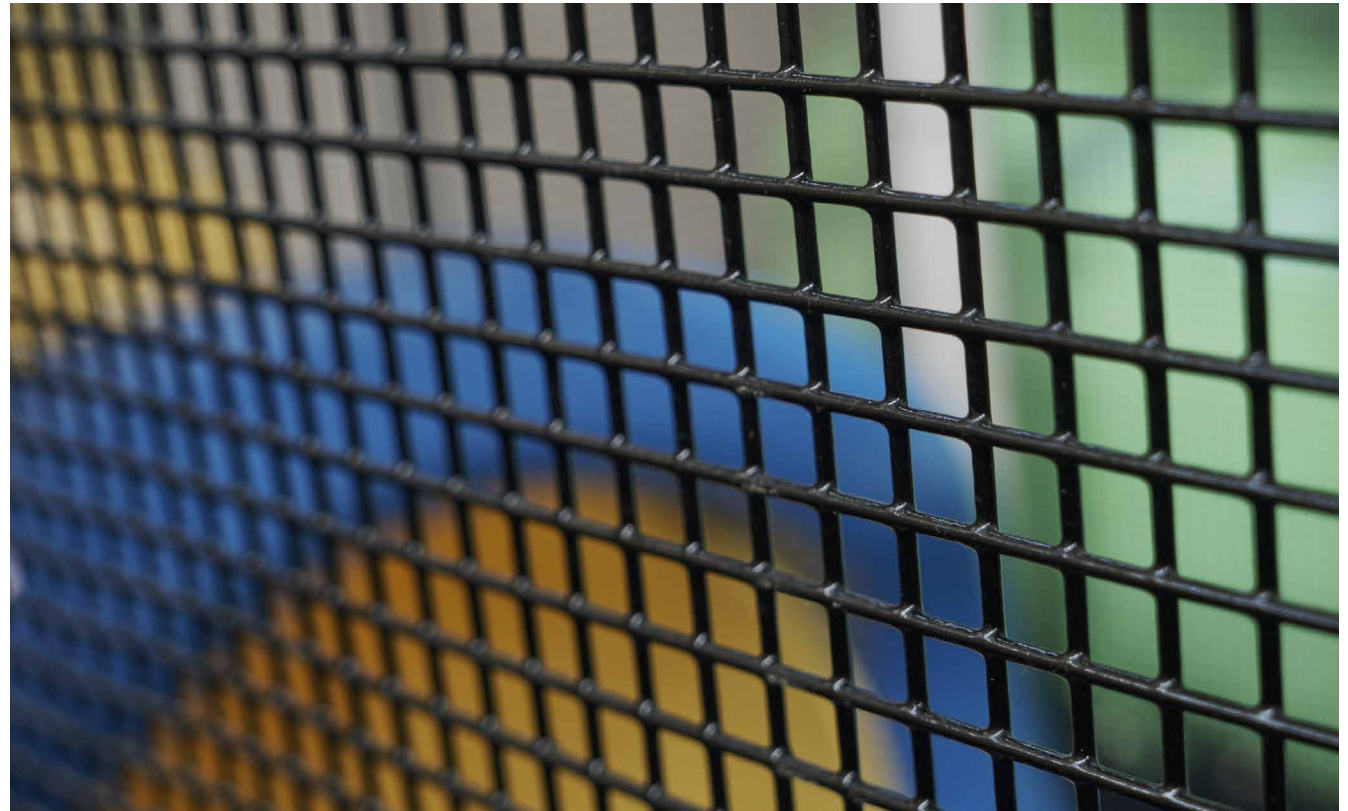
Provides greater durability and maintenance free

Structure

1/2" 16ga metal wire welded mesh

Coating

Vinyl dipped



MATERIALS ADVENTURE ROPES

Soft Play Project Proposal



OVERVIEW

Appearance

16mm Netform cable rope.

Longevity

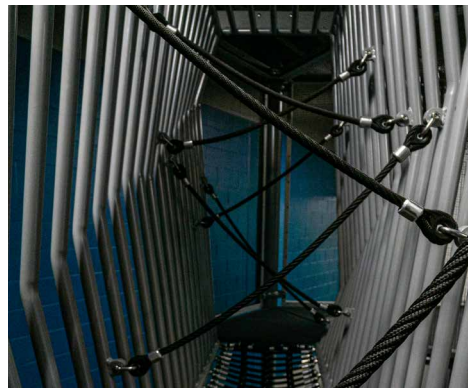
Proven to withstand heavy foot traffic and maintains integrity years after installation.

Structure

Six strands of 2.5mm galvanized steel wire central core.

Strength

>7000lb tensile strength.



HIGH DENSITY POLYETHYLENE (HDPE) OVERVIEW

Appearance

UV stabilized for fade resistant use. Will not rot, delaminate, splinter or crack.

Longevity

Virtually unbreakable

Structure

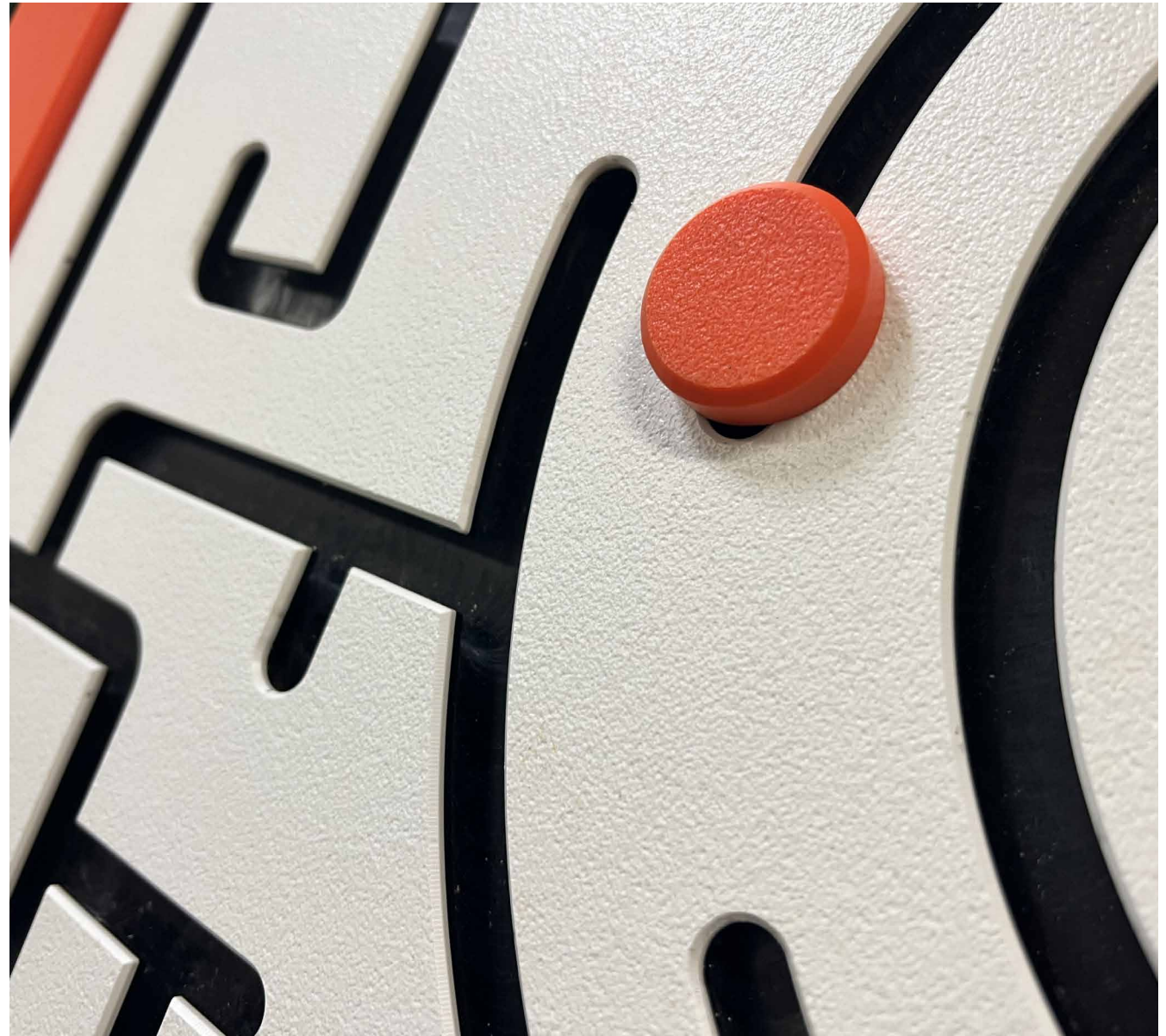
High impact resistant, 100% recyclable, and non-toxic

Coating

Durable textured finish

Versatility

Used for play panels, theming, and barriers



SURFACING POURED IN PLACE FLOORING

Soft Play Project Proposal



OVERVIEW

Lighter colors may require an Aliphatic binder to prevent yellowing at an additional cost

color(s) may vary slightly from samples shown.

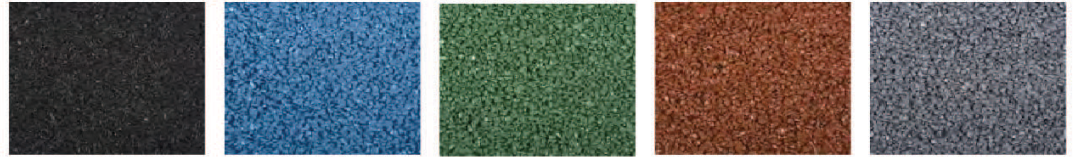
Material Details

E.P.D.M. Color Cap .5" to
Create Custom Designs

Shredded
Rubber Base



MIX COLOR OPTIONS



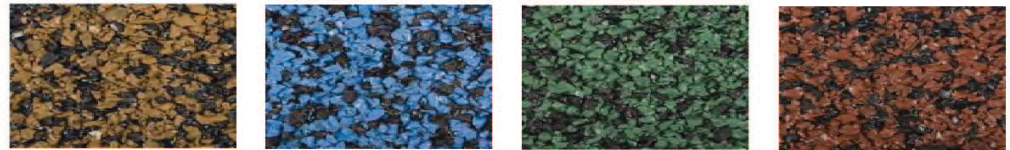
Black

Blue

Green

Red - Terra Cotta

Grey

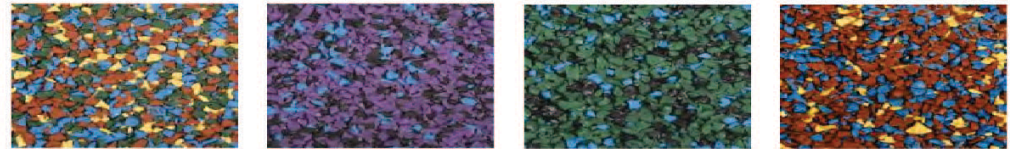


Tan/Black

Blue/Black

Green/Black

Red/Black



Fiesta

Purple Mountain

Green Fields

Confetti



Grey Black
Premium

Starburst

Earth

Hawaiian Sand

SURFACING POURED IN PLACE FLOORING

Soft Play Project Proposal



OVERVIEW

Lighter colors may require an Aliphatic binder to prevent yellowing at an additional cost

color(s) may vary slightly from samples shown.

Material Details

E.P.D.M. Color Cap .5" to
Create Custom Designs

Shredded
Rubber Base



SOLID COLOR OPTIONS



Terra Cotta



Primary Red



Gold



Beige



Yellow



Bright Green



Army Green



Hunter Green



Teal



Sky Blue



Royal Blue



Purple



Pearl



Eggshell



Brown



Light Gray



Dark Gray



Black



Orange (indoor only)



PlayPower brands are leaders in indoor play, outdoor play, site amenities, water, and safety surfacing. We leverage the innovation from each of our brands the most unique, cutting-edge, and highest quality play experiences inspired from locations around the world. When you partner with a PlayPower company, you're drawing from wealth of experience from 11 leaders in the industry.

Soft Play, LLC is a wholly owned subsidiary of PlayPower.



30,000

PLAYGROUNDS EVERY YEAR

200

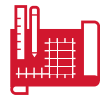
COUNTRIES WE'VE SERVED

14

FACILITIES WORLD WIDE



UNMATCHED QUALITY



CUSTOM PRODUCT ENGINEERING



COMPANY OWNED MANUFACTURING

1,800

EMPLOYEES WORLDWIDE

11

INDUSTRY LEADERS IN PLAY

1

SAFETY IS OUR #1 PRIORITY



SUPERIOR DESIGN



PROJECT MANAGEMENT



INSTALLATION & MAINTENANCE





**WE APPRECIATE YOUR TIME IN REVIEWING
OUR PROPOSAL.**





**Parks & Recreation Advisory Commission
Staff Report**

SUBJECT: Sleepy Hollow Park Playground Replacement Options

MEETING DATE: November 12, 2025

ITEM TYPE: Regular Agenda

CONTACT: Adam Lares, Parks & Recreation Director, 651.450.2587

PURPOSE/ACTION REQUESTED

Review Playground Designs and Concepts for Sleepy Hollow Park

BACKGROUND

Over the past several months, the City initiated community engagement efforts to gather feedback for the planned Sleepy Hollow Park playground replacement, which is scheduled for improvements in the 2026 Capital Improvement Plan (CIP). The new playground designs were developed through an extensive process involving both community input and staff collaboration.

Public engagement included a citywide survey shared through the City's website and social media platforms, as well as onsite open houses at Sleepy Hollow Park. Feedback from these efforts played a key role in shaping the final design concepts.

At this work session, staff will present the final playground design options and request the Parks and Recreation Advisory Commission's (PRAC) recommendation during the regularly scheduled meeting following the session. Staff requests that Commissioners take time to review the attached design options in advance of the work session to allow for a more productive discussion and informed recommendation.

The proposed designs align with the approved project budget, and preliminary concept images are attached to this summary. Full design details and visuals will be reviewed during the presentation.

FISCAL IMPACT

All playground replacement options are within the approved 2026 CIP Parks Budget.

RECOMMENDATION

That the PRAC review and discuss the playground replacement options and, at their regularly scheduled meeting following the work session, provide a recommendation to the council for purchasing the selected option.

ATTACHMENTS

1. Sleepy Hollow Revised Design Options







LS landscape structures

Sleepy Hollow Park - Opt 1

IGH_SleepyHollow 100925 Opt1 • 10.15.2025



© 2025 Landscape Structures. All Rights Reserved







LS landscape
structures

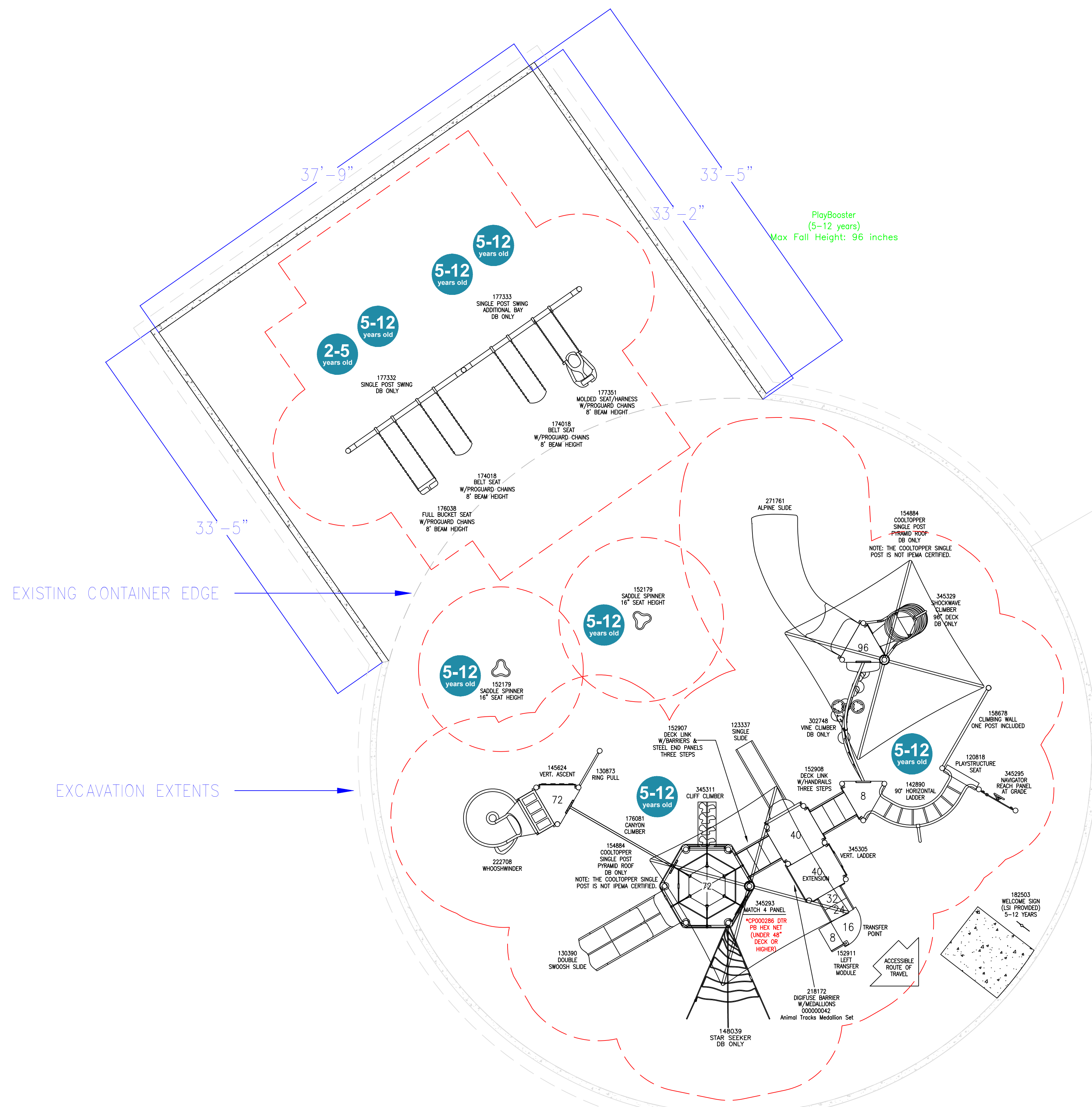
Sleepy Hollow Park - Opt 1

IGH_SleepyHollow 100925 Opt1 • 10.15.2025



© 2025 Landscape Structures. All Rights Reserved





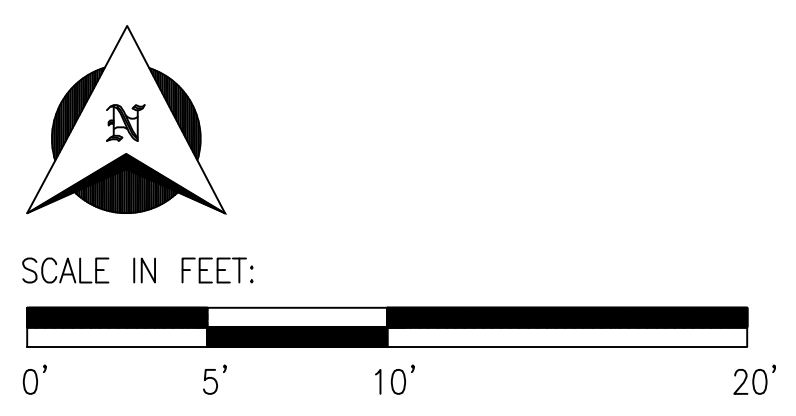
CONTAINER DETAILS

TOTAL CONTAINER AREA	3826 SF
ASTM SAFETY SURFACING TYPE	ENGINEERED WOOD FIBER
TOTAL EXPANSION AREA	1077 SF
TOTAL EWF AREA	3826 SF
TOTAL NEW FLATWORK	30 SF (RAMP INTO CONTAINER)
TOTAL NEW CURB	106 LF
EDGING TYPE	6"X12" CONCRETE CURB & EXISTING
FINISH GRADE	TOP OF CONCRETE CURB

- **SITE PREPARATION REQUIREMENTS:**
- MAXIMUM OF 1% GRADE CHANGE ACROSS CONTAINER
 - NO PRE-INSTALLED DRAIN TILE OUTSIDE OF 4 FEET OF PERIMETER
 - DRAIN TILE STUB TO BE PROVIDED IF DRAIN TILE IS REQUIRED
 - NO DRAINAGE AGGREGATE PRE-INSTALLED
 - NO FABRIC PRE-INSTALLED
 - MINIMUM CONTAINER SIZE NEEDED DENOTES THE INSIDE OF CURB DIMENSION

EXISTING CONTAINER EDGE

EXCAVATION EXTENTS



2-5 AREA

TOTAL ELEVATED PLAY COMPONENTS	0	REQUIRED	0
TOTAL ELEVATED COMPONENTS ACCESSIBLE BY RAMP	0	REQUIRED	0
TOTAL ELEVATED COMPONENTS ACCESSIBLE BY TRANSFER	0	REQUIRED	0
TOTAL ACCESSIBLE GROUND LEVEL COMPONENTS SHOWN	1	REQUIRED	0
TOTAL DIFFERENT TYPES OF GROUND LEVEL COMPONENTS	1	REQUIRED	1

5-12 AREA

TOTAL ELEVATED PLAY COMPONENTS	14	REQUIRED	0
TOTAL ELEVATED COMPONENTS ACCESSIBLE BY RAMP	0	REQUIRED	0
TOTAL ELEVATED COMPONENTS ACCESSIBLE BY TRANSFER	8	REQUIRED	8
TOTAL ACCESSIBLE GROUND LEVEL COMPONENTS SHOWN	9	REQUIRED	5
TOTAL DIFFERENT TYPES OF GROUND LEVEL COMPONENTS	6	REQUIRED	6



FLAGSHIP RECREATION
 11123 UPPER 33RD ST N
 LAKE ELMO, MN 55082
 763-550-7860
 FLAGSHIPPLAY.COM
 @FLAGSHIPPLAY



THIS PLAY AREA & PLAY EQUIPMENT IS
 DESIGNED FOR AGE RANGES AS NOTED
 ON PLAN.

**Sleepy Hollow Park
 Option 1**

3645 84th St E
 Inver Grove Heights, MN 55076

SALES REPRESENTATIVE:
 Emily Maloney

DESIGNED BY:
 JLZT
 10/15/25

3/16" = 1'-0"

SHEET

LS101







LS landscape structures

Sleepy Hollow Park - Opt 2

IGH_SleepyHollow 100925 Opt2 • 10.15.2025



© 2025 Landscape Structures. All Rights Reserved





LS landscape
structures

Sleepy Hollow Park - Opt 2

IGH_SleepyHollow 100925 Opt2 • 10.15.2025



© 2025 Landscape Structures. All Rights Reserved



LS landscape
structures

Sleepy Hollow Park - Opt 2

IGH_SleepyHollow 100925 Opt2 • 10.15.2025



© 2025 Landscape Structures. All Rights Reserved





Welcome

WHAT SHOULD DO YOU HEAR IN THE WILDERNESS?





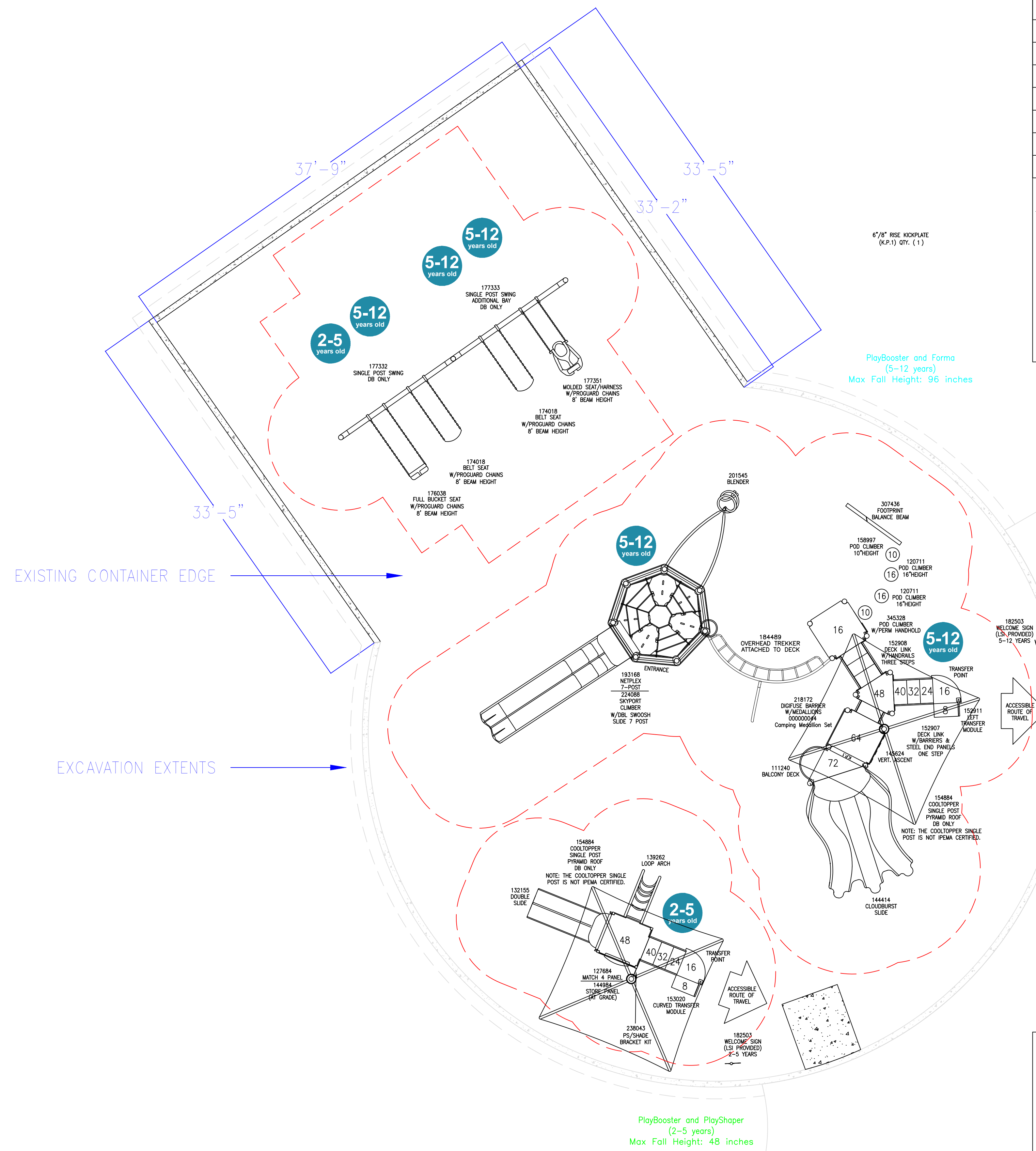


CONTAINER DETAILS

TOTAL CONTAINER AREA	3826 SF
ASTM SAFETY SURFACING TYPE	ENGINEERED WOOD FIBER
TOTAL EXPANSION AREA	1077 SF
TOTAL EWF AREA	3826 SF
TOTAL NEW FLATWORK	30 SF (RAMP INTO CONTAINER)
TOTAL NEW CURB	106 LF
EDGING TYPE	6"X12" CONCRETE CURB & EXISTING
FINISH GRADE	TOP OF CONCRETE CURB

****SITE PREPARATION REQUIREMENTS:**

- MAXIMUM OF 1% GRADE CHANGE ACROSS CONTAINER
- NO PRE-INSTALLED DRAIN TILE OUTSIDE OF 4 FEET OF PERIMETER
- DRAIN TILE STUB TO BE PROVIDED IF DRAIN TILE IS REQUIRED
- NO DRAINAGE AGGREGATE PRE-INSTALLED
- NO FABRIC PRE-INSTALLED
- MINIMUM CONTAINER SIZE NEEDED DENOTES THE INSIDE OF CURB DIMENSION



2-5 AREA

TOTAL ELEVATED PLAY COMPONENTS	3	REQUIRED 0
TOTAL ELEVATED COMPONENTS ACCESSIBLE BY RAMP	0	REQUIRED 0
TOTAL ELEVATED COMPONENTS ACCESSIBLE BY TRANSFER	3	REQUIRED 2
TOTAL ACCESSIBLE GROUND LEVEL COMPONENTS SHOWN	2	REQUIRED 1
TOTAL DIFFERENT TYPES OF GROUND LEVEL COMPONENTS	2	REQUIRED 2

5-12 AREA

TOTAL ELEVATED PLAY COMPONENTS	7	REQUIRED 0
TOTAL ELEVATED COMPONENTS ACCESSIBLE BY RAMP	0	REQUIRED 0
TOTAL ELEVATED COMPONENTS ACCESSIBLE BY TRANSFER	4	REQUIRED 4
TOTAL ACCESSIBLE GROUND LEVEL COMPONENTS SHOWN	8	REQUIRED 2
TOTAL DIFFERENT TYPES OF GROUND LEVEL COMPONENTS	3	REQUIRED 3



FLAGSHIP RECREATION
11123 UPPER 33RD ST N
LAKE ELMO, MN 55082
763-550-7860
FLAGSHIPPLAY.COM
@FLAGSHIPPLAY



THIS PLAY AREA & PLAY EQUIPMENT IS
DESIGNED FOR AGE RANGES AS NOTED
ON PLAN.

Sleepy Hollow Park
Option 2

3645 84th St E
Inver Grove Heights, MN 55076

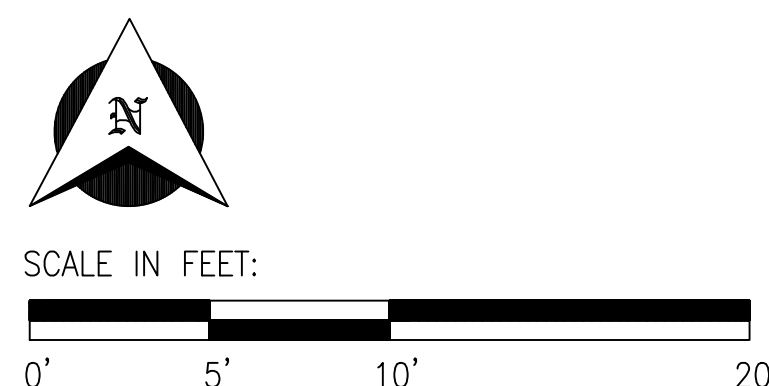
SALES REPRESENTATIVE:
Emily Maloney

DESIGNED BY:
JLZT
10/15/25

3/16" = 1'-0"

SHEET

LS101



C:\Users\jlm\OneDrive\flagship Recreation - Documents\2025 Planning\GHI - Sleepy Hollow\2025\10-09 Revised Design\GHI - Sleepy Hollow\2025\10-09 Rev 2\GHI_SleepyHollow_100925_Opt2.dwg



Sleepy Hollow Park - Opt 3

IGH_SleepyHollow 100925 Opt3 • 10.15.2025



© 2025 Landscape Structures. All Rights Reserved







WARNING

SLR landscape structures
playto.com

This playstructure has been designed for children 2 to 12 years old and requires users to have sufficient strength and coordination.

Adult supervision is strongly recommended and required for preschoolers.

Welcome

SLR landscape structures

Sleepy Hollow Park - Opt 3

IGH_SleepyHollow 100925 Opt3 • 10.15.2025







lsr landscape
structures

Sleepy Hollow Park - Opt 3

IGH_SleepyHollow 100925 Opt3 • 10.15.2025



© 2025 Landscape Structures. All Rights Reserved











Sleepy Hollow Park - Opt 3

IGH_SleepyHollow 100925 Opt3 • 10.15.2025



© 2025 Landscape Structures. All Rights Reserved



landscape structures

Sleepy Hollow Park - Opt 4

IGH_SleepyHollow 100925 Opt4 • 10.15.2025



© 2025 Landscape Structures. All Rights Reserved



Sleepy Hollow Park - Opt 4

IGH_SleepyHollow 100925 Opt4 • 10.15.2025



© 2025 Landscape Structures. All Rights Reserved



Communication Board

✓	👤	👤	➡	👤	👤	👤	👤
✗	👤	👤	🛑	👤	👤	👤	👤
👤	👤	👤	👤	👤	👤	👤	👤
👤	👤	👤	👤	👤	👤	👤	👤
?	👤	👤	👤	👤	👤	👤	👤
?	👤	👤	👤	👤	👤	👤	👤
👤	👤	👤	👤	👤	👤	👤	👤
👤	👤	👤	👤	👤	👤	👤	👤
👤	👤	👤	👤	👤	👤	👤	👤
👤	👤	👤	👤	👤	👤	👤	👤
A	B	C	D	E	F	G	H
I	J	K	L	M	N	O	P
Q	R	S	T	1	2	3	4
5	6	7	8	9	0		

Welcome



Sleepy Hollow Park - Opt 4

IGH_SleepyHollow 100925 Opt4 • 10.15.2025





LS landscape
structures

Sleepy Hollow Park - Opt 4

IGH_SleepyHollow 100925 Opt4 • 10.15.2025



© 2025 Landscape Structures. All Rights Reserved



SLEEPY HOLLOW

landscape structures

Sleepy Hollow Park - Opt 4

IGH_SleepyHollow 100925 Opt4 • 10.15.2025



© 2025 Landscape Structures. All Rights Reserved





SLEEPY HOLLOW

landscape structures

Sleepy Hollow Park - Opt 4

IGH_SleepyHollow 100925 Opt4 • 10.15.2025



© 2025 Landscape Structures. All Rights Reserved





Sleepy Hollow Park - Opt 4

IGH_SleepyHollow 100925 Opt4 • 10.15.2025



© 2025 Landscape Structures. All Rights Reserved



LS landscape
structures

Sleepy Hollow Park - Opt 4

IGH_SleepyHollow 100925 Opt4 • 10.15.2025



© 2025 Landscape Structures. All Rights Reserved

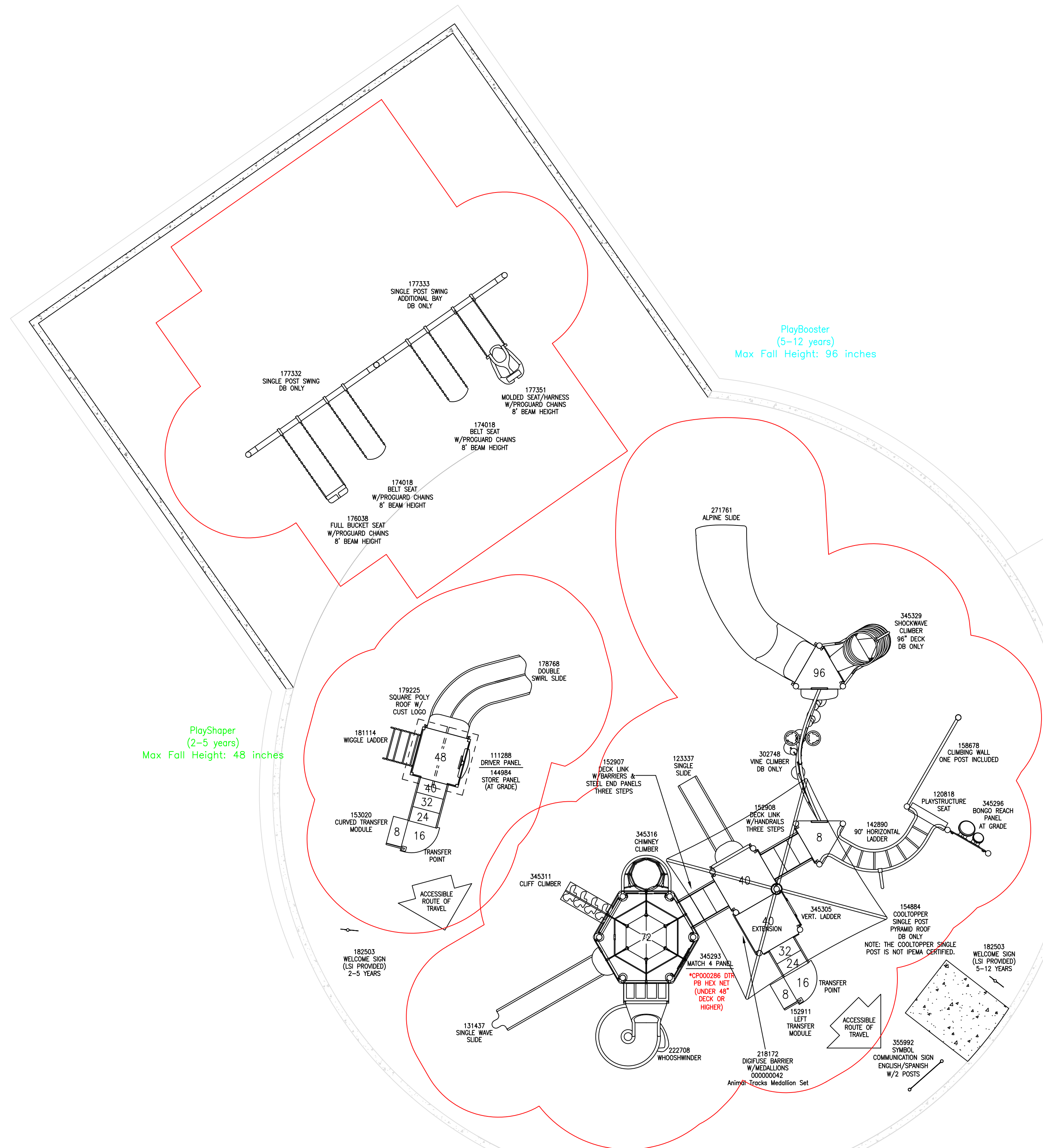


CONTAINER DETAILS

TOTAL CONTAINER AREA	3826 SF
ASTM SAFETY SURFACING TYPE	ENGINEERED WOOD FIBER
TOTAL EXPANSION AREA	1077 SF
TOTAL EWF AREA	3826 SF
TOTAL NEW FLATWORK	30 SF (RAMP INTO CONTAINER)
TOTAL NEW CURB	106 LF
EDGING TYPE	6"X12" CONCRETE CURB & EXISTING
FINISH GRADE	TOP OF CONCRETE CURB

****SITE PREPARATION REQUIREMENTS:**

- MAXIMUM OF 1% GRADE CHANGE ACROSS CONTAINER
- NO PRE-INSTALLED DRAIN TILE OUTSIDE OF 4 FEET OF PERIMETER
- DRAIN TILE STUB TO BE PROVIDED IF DRAIN TILE IS REQUIRED
- NO DRAINAGE AGGREGATE PRE-INSTALLED
- NO FABRIC PRE-INSTALLED
- MINIMUM CONTAINER SIZE NEEDED DENOTES THE INSIDE OF CURB DIMENSION



PlayShaper
(2-5 years)
Max Fall Height: 48 inches

PlayBooster
(5-12 years)
Max Fall Height: 96 inches

2-5 AREA

TOTAL ELEVATED PLAY COMPONENTS	3		
TOTAL ELEVATED COMPONENTS ACCESSIBLE BY RAMP	0	REQUIRED	0
TOTAL ELEVATED COMPONENTS ACCESSIBLE BY TRANSFER	3	REQUIRED	2
TOTAL ACCESSIBLE GROUND LEVEL COMPONENTS SHOWN	2	REQUIRED	1
TOTAL DIFFERENT TYPES OF GROUND LEVEL COMPONENTS	2	REQUIRED	2

5-12 AREA

TOTAL ELEVATED PLAY COMPONENTS	12		
TOTAL ELEVATED COMPONENTS ACCESSIBLE BY RAMP	0	REQUIRED	0
TOTAL ELEVATED COMPONENTS ACCESSIBLE BY TRANSFER	9	REQUIRED	6
TOTAL ACCESSIBLE GROUND LEVEL COMPONENTS SHOWN	6	REQUIRED	4
TOTAL DIFFERENT TYPES OF GROUND LEVEL COMPONENTS	4	REQUIRED	4



FLAGSHIP RECREATION
11123 UPPER 33RD ST N
LAKE ELMO, MN 55082
763-550-7860
FLAGSHIPPLAY.COM
@FLAGSHIPPLAY



THIS PLAY AREA & PLAY EQUIPMENT IS
DESIGNED FOR AGE RANGES AS NOTED
ON PLAN.

Sleepy Hollow Park
Option 4

3645 84th St E
Inver Grove Heights, MN 55076

SALES REPRESENTATIVE:
Emily Maloney

DESIGNED BY:
JLZT
10/15/25

3/16" = 1'-0"

SHEET

LS101

